



**51-203 SINGLE REGULATED  
51-204 DOUBLE REGULATED**

**IMPORTANT NOTE:** IF THIS PRESSURE TANK IS TO BE USED FOR SPRAYING FLAMMABLE MATERIALS, OPERATOR MUST NOT PRESSURIZE THIS TANK MORE THAN 15 PSI TO MEET OSHA REQUIREMENTS. FOR NON-ASME PRESSURE VESSELS. IT IS THE RESPONSIBILITY OF THE OPERATOR TO FOLLOW THIS MANDATORY PROCEDURE.

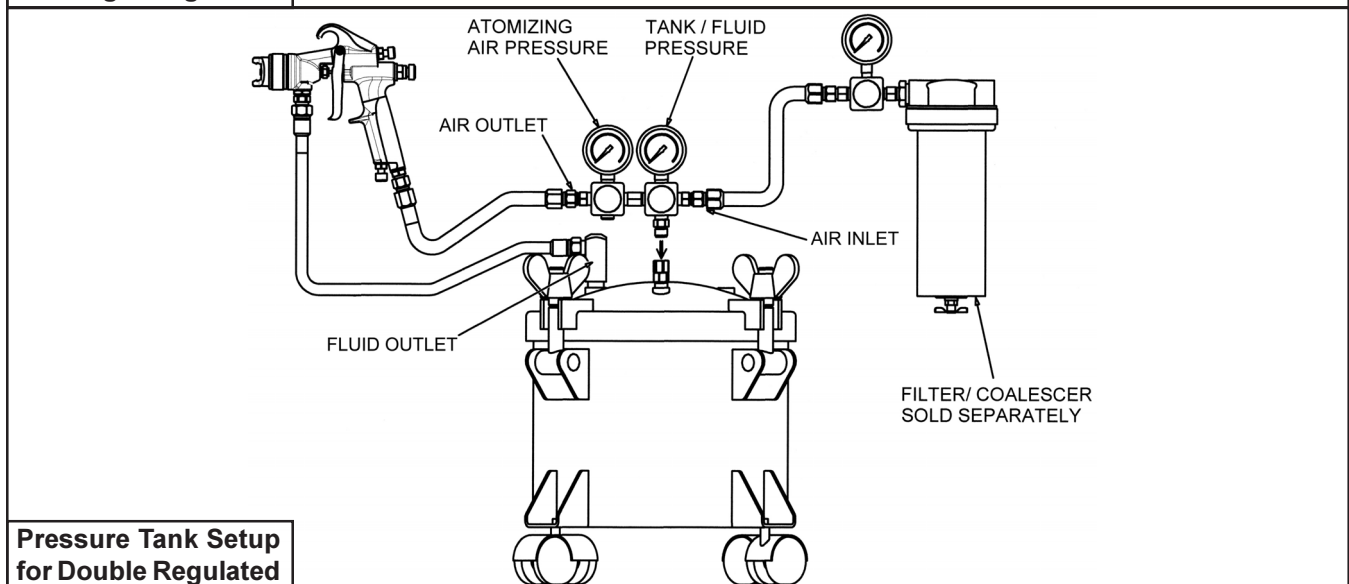
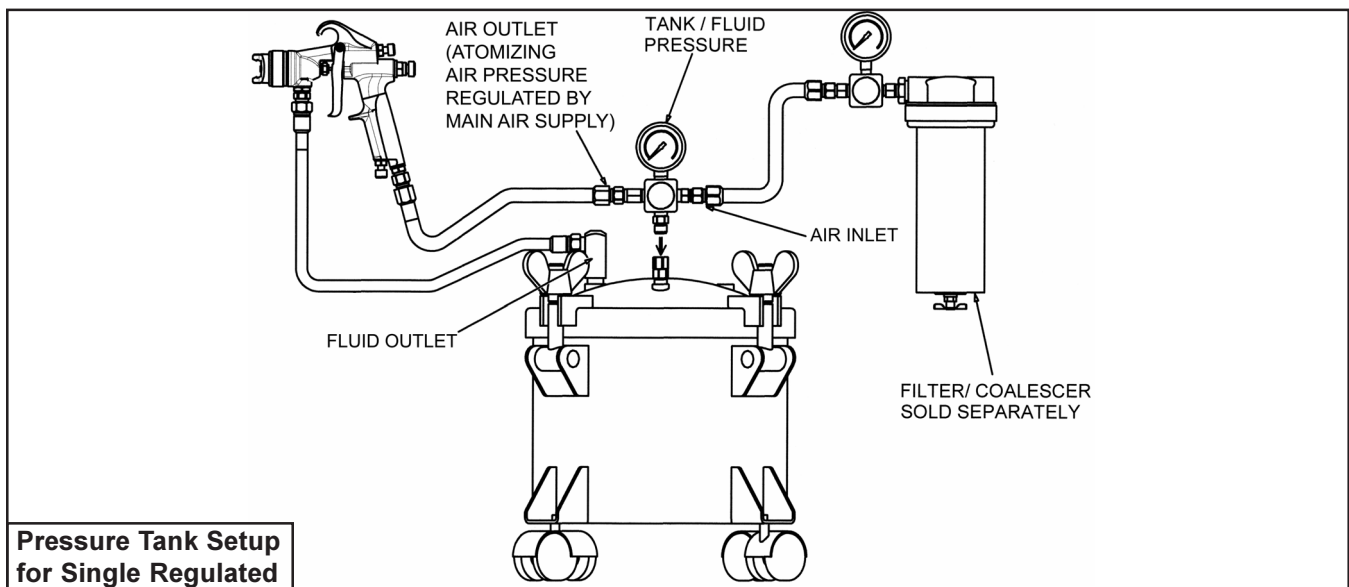
## GENERAL INFORMATION

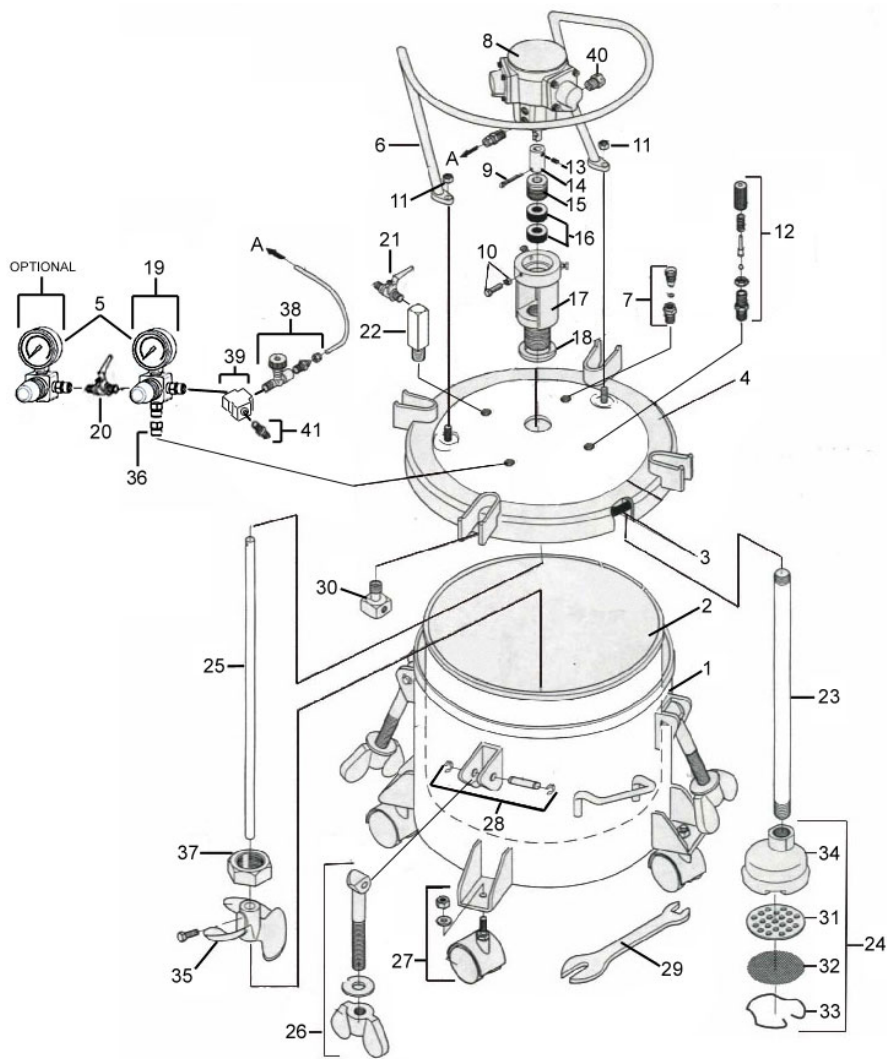
This pressure tank is equipped with either single or double air pressure regulation, pressure safety relief valve, a disposable plastic liner, and four caster wheels.

## CAUTION!

1. Maximum tank pressure of 80 psi. The safety relief valve is designed to protect the tank against excessive pressures. **DO NOT** attempt to make adjustments to this valve. If this valve begins to vent air, reduce the setting on the air inlet regulator.
2. **DO NOT** alter the tank in any way by welding, drilling or machining as this may weaken the structure of the tank.
3. To prevent hazardous static sparks from occurring, always ground the tank by connecting a 12 ga. wire to the tank and to a known earth ground.
4. Halogenated solvents will react chemically with aluminum and may cause an explosion. Examples of halogenated solvents are 111 trichlorethane and methylene chloride. **DO NOT use the removable aluminum tank liner with any halogenated solvents.**
5. Be sure tank pressure is completely relieved before attempting to remove tank cover or material fill cap. Shut off the main air supply to the tank and vent pressure using the vent valve located on the tank lid.

**\*\*NOTE\*\* Oilless Motor Used on CAT Agitated Tanks - DO NOT OIL TANK MOTORS**





ITEM NO.	PART NO.	DESCRIPTION	ITEM NO.	PART NO.	DESCRIPTION
1	51-226	Tank Shell	21	52-151	Material Outlet Valve
2	51-261	Disposable Ridged Tank Liner	22	51-230	Fluid Outlet Fitting
	51-227	Tank Liner	23	51-223	Fluid Pickup Tube
3	51-220	Gasket (Available in 3 Pack)	24	51-232	Inlet Strainer Assembly
4	51-228	Tank Lid Assembly	25	51-258	Agitator Shaft
5	52-58	Pressure Gage	26	51-236	Eye Bolt Assembly
6	51-238	Guard	27	51-224	Caster (51-252 Opt. Stationary Feet)
7	51-234	Tank Vent Valve	28	51-233	Pin Assembly
8	51-240	Air Motor	29	51-225	Wrench
9	51-266	Roll Pin	30	51-237	Air Flow Diffuser
10	51-264	Screw & Nut 1/4-20 x 1' lg	31	51-254	Inlet Screen Backup Plate
11	98-0115	Nut 3/8-16	32	51-248	Inlet Screen
12	51-229	Safety Relief Valve Assembly	33	51-255	Inlet Retainer Clip
13	51-262	Set Screw 1/4-20 x 1" lg	34	51-256	Inlet Strainer Body
14	51-242	Coupling	35	51-246	Propeller W/Bolt
15	51-288	Packing Nut	36	51-280	Swivel Connection
16	51-289	Chevron Packing Set	37	51-259	Retaining Nut
17	51-287	Air Motor Base	38	51-247	Speed Valve Control Assembly
18	51-245	Seal Ring	39	51-272	3-Way Union
19	52-10A	Fluid Regulator (52-11A Opt. 2nd)	40	51-271	Muffler
20	52-150	Air Shut Off Valves	41	51-239	Double Male Nipple

**Pressure Tanks Available From C.A. Technologies**



2.5 Gallon Pressure Tank  
51-201 Single Regulated  
51-202 Double Regulated



2.5 Gallon Pressure Tank  
With Air Powered Agitation  
51-203 Single Regulated  
51-204 Double Regulated



5 Gallon Pressure Tank  
With No Agitation  
51-507 Single Regulated  
51-508 Double Regulated



5 Gallon Pressure Tank  
With Manual Agitation  
51-501 Single Regulated  
51-502 Double Regulated



5 Gallon Pressure Tank  
With Air Powered Agitation  
51-503 Single Regulated  
51-504 Double Regulated



10 Gallon Pressure Tank  
With No Agitation  
51-551 Single Regulated  
51-552 Double Regulated



10 Gallon Pressure Tank  
With Manual Agitation  
51-557 Single Regulated  
51-558 Double Regulated



10 Gallon Pressure Tank  
With Air Powered Agitation  
51-553 Single Regulated  
51-554 Double Regulated